



BLIN MACHINERY

CHINESE TECHNOLOGY

FLAT BED CNC LATHE
CNC PIPE THREADING LATHE
CONVENTIONAL LATHE



NINGBO BLIN MACHINERY CO.,LTD.

Export sales center: No.415 Zhenhai Avenue, Luotuo, Zhenhai District, Ningbo, China. P.C.:315202
Tel:+86-574-87176990 / 87579510 / 86571950 Fax:+86-574-87179916
Email: jimmy@blinmachinery.com
www.blincnc.com



www.blincnc.com

Machines' design and specification are subjected to update without notice

2021A

www.blincnc.com
NINGBO BLIN MACHINERY CO.,LTD.

History

Our advantages:

www.blincnc.com



LINEAR-GUIDEWAY FLAT BED CNC LATHE

Z0632 01/02

LINEAR guideway, Economical,576" collet/chuck, Gang tool,without tailstock

BOX-GUIDEWAY FLAT BED CNC LATHE

• CK SHORT SERIES

CK6132 03/04
350mm guideway width,spindle bore:50mm

• TK PRECISE SERIES

TK36S/EK40 05/06
316mm guideway width, spindle bore:57mm, CHINA top quality

• CK LIGHT-DUTY SERIES

CK6136/6140 07/08
312mm guideway width,spindle bore: 52mm

• SK PRECISE SERIES

SK40S/50S/66Q 09/10
390mm guideway width,spindle bore: 77/82/105mm, CHINA top quality

• TK PRECISE SERIES

TK50 11/12
390mm guideway width,spindle bore: 87mm, CHINA top quality

• CAK STANDARD SERIES

CAK6140/6150/6161/6166/6180 13/14
400mm guideway width,spindle bore:52/80/104mm

• HK PRECISE HEAVY-DUTY SERIES

HK63B/80B 15/16
560mm guideway width,spindle bore:105mm,CHINA top quality

• HK PRECISE HEAVY-DUTY SERIES

HK80/100 17/18
650/755mm guideway width,spindle bore:105/130mm,CHINA top quality

• CKL STANDARD SERIES

CKL6163/6180A/6180B/61100 19/20
550/600mm guideway width,spindle bore:104mm

• CK HEAVY-DUTY SERIES

CK61100/61125/61140/61160 21/22
755mm guideway width,spindle bore:130mm

• CKW HEAVY-DUTY SERIES

CKW61125/61140/61160/61180/61200 23/24
1100mm guideway width,spindle bore:100mm

CNC PIPE THREADING LATHE

• QK STANDARD SERIES

QK1313/1319/1322/1325/1327A 25/26
550/600mm guideway width,spindle bore:130/200/225/255/280mm, high quality

• QK HEAVY-DUTY SERIES

QK1327B/1332/1338/1343/1350/1363 27/28
755/1100mm guideway width,spindle bore:280/330/390/440/520/640mm, high quality

CONVENTIONAL LATHE

• B PRECISE HEAVY-DUTY SERIES

HL-B40/50/66/80 29/30
380mm guideway width,CHINA top quality

HL-B63B/80A 31/32
560mm guideway width, CHINA top quality



Features:

- TAIWAN linear guideway and ball screw
- Super high performance-price ratio



Own-made collet with gang tool



TAIWAN CL Collet chuck(opt.)



SCHNEIDER electricity parts



GSK980TC3

Specification:

Item	Specification	Unit	BL-Z0632
Capacity	Chuck size	/	5"76"
	Max. swing dia. over bed	mm	Φ400
	Max. swing dia. over slide	mm	Φ120
	Max. turning length	mm	200(chuck)
Spindle	Spindle speed	rpm	3000
	Spindle type	/	A2-5
	Spindle bore	mm	Φ48
	Spindle motor	kw	3
	Clamping device	/	Hydraulic collet/Hydraulic chuck
X/Z axes	X/Z axes travel	mm	320/330
	X/Z axes servo motor	N.m	4/4
	X/Z axes rapid move speed	m/min.	20/20
	X/Z ball screw O.D.	mm	Φ25/Φ32
	X/Z linear guideway width	mm	25/30
	X/Z axes positioning accuracy	mm	0.03/0.03
Tool post	Tool post	/	Gang tool/4T tool turret
	Toolhank size	mm	20×20
Tailstock	Tailstock	/	N/A
Others	Overall size	mm	1700×1400×1700
	N.W.	kg	1200

Main parts list:

Item	Brand
Bearings	CHINA top
Ball screw	TAIWAN
Linear guideway	TAIWAN
Chuck& cylinder	TAIWAN-AUTOGRIP
Main electric parts	FRANCE-SCHNEIDER

Standard configuration:

- GSK980TC3 CNC Controller
- Hydraulic collet
- Gang tool

Optional configuration:

- SIEMENS 808D ADVANCED CNC controller
- Hydraulic chuck
- 4 station tool turret



Features:

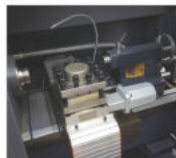
- Wide guideway and big ball screw, good rigidity
- Ball screw mount at middle of guideway and connect with motor directly, drag force is equal, small friction
- Guideway and ball screw full enclosed



Bridge shape spindle



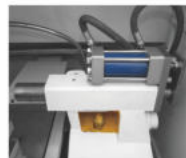
Strong guideway middle set ball screw



Collet and 4 station tool turret



Chuck and 8 station tool turret



Hydraulic tailstock

Specification:

Item	Specification	Unit	BL-CK6132
Capacity	Guideway width	mm	350
	Max. swing dia. over bed	mm	Φ320
	Max. swing dia. over slide	mm	Φ160
Spindle	Spindle speed range	rpm	200~2500
	Spindle bore	mm	Φ50
	Spindle nose	/	A2-5
	Spindle motor power	kw	5.5
	Spindle bearings(front+back)	pcs	3+2
X/Z axes	X/Z axes travel	mm	260/450
	X/Z axes feeding speed	m/min	8/8
	Finish turning accuracy	mm	±0.01
	X/Z axes repeatability	mm	0.01
	Slide board size	mm	185×380
	X axes ball screw dia./pitch	mm	25/4
	Z axes ball screw dia./pitch	mm	40/6
Tailstock	X/Z axes motor	N.m	4/6
	Tailstock quill dia./travel	mm	Φ58/130
Tool post	Tailstock quill taper	/	MT4#
	Tool turret type	/	Vertical 4T/gang tool/Horizontal 6,8T
	Tool shanksize	mm	24×24
Others	Overall size(L×W×H)	mm	1810×1160×1600
	N.W.	kg	1600

Main parts list:

Item	Brand
Bearing	China top-HRB P4 class
Ball screw	China top
Spindle lipid	US SHELL
Contact	SIEMENS OEM
Pneumatic parts	TAIWAN-AIRTAC
Electricity parts	China top
linkager	JAPAN
Hydraulic parts	TAIWAN

Standard configuration:

- SIEMENS 808D ADVANCED CNC controller
- Manual chuck
- 4 station tool post
- Manual tailstock

Optional configuration:

- Hydraulic chuck
- Gang tool, 6,8 station tool turret
- Hydraulic tailstock



Features:

- Adopt China best high strength compound resin sand cast iron
- Aging treatment, has good vibration absorption and rigidity
- Adopt independent spindle, 3000rpm high speed, especially suitable for nonferrous metal processing
- Spindle unit adopt precise angle contact ball bearing and double column cylindrical roller bearings
- Guideway hardened by ultrasonic frequency and precise ground, good precision keeping
- Guideway stick PTFE, remove creeping, obviously increase precision, wearability and anti-impact force
- Adopt independent coolant tank design



Independent spindle



Machine inside



Electricity cabinet



SIEMENS 808D ADVANCED

Specification:

Item	Specification	Unit	BL-TK36S	BL-EK40
Capacity	Guideway width	mm	316	
	Max. swing dia. over bed	mm	Φ360	Φ400
	Max. swing dia. over slide	mm	Φ180	Φ200
	Max. turning dia.	mm	Φ320(vertical 4T tool turret); Φ220(horizontal 6T tool turret)	Φ400
	Center distance	mm	750/690/650 (vertical 4T/horizontal 6 T tool turret/ Φ75mm tailstock quill)	750/1000
Max turning length		mm	600/540/500 (vertical 4T/horizontal 6 T tool turret/ Φ75mm tailstock quill)	580/830
	Max. workpiece weight	kg	550(8" manual chuck)	
Spindle	Spindle bore	mm	Φ57	
	Spindle head type	/	ISO702/1 A2-6(manual chuck, 8" hydraulic chuck); ISO702/1 A2-5(6" hydraulic chuck)	
	Spindle speed	rpm	140-3000(stepless)	
	Spindle motor	kw	5.5(servo)	
	Chuck size	/	8"	
X/Z axes	X axes travel	mm	200/150 (vertical 4T/horizontal 6T tool turret)	230
	Z axes travel	mm	610/550/510 (vertical 4T/horizontal 6 T tool turret/ Φ75mm tailstock quill)	590/840
Tool post	X/Z axes rapid speed	m/min	6/8	
	X,Z axes ball screw O.D./pitch	mm	Φ25/5,Φ40/6	
	Tool turret type	/	Vertical 4/Horizontal 6 station/gang tool	
	Tool shank size	mm	20×20,Φ32	
Tailstock	Tailstock quill dia./travel	mm	Φ55/120(hydraulic tailstock: 100); Φ75/150(hydraulic tailstock: 130)	Φ65/120
	Tailstock quill taper	/	MT4#	
Accuracy	X/Z axes positioning accuracy	mm	0.026/0.032	0.026/0.032(750mm); 0.036(1000mm)
	X/Z axes repeatability positioning accuracy	mm	0.007/0.009	0.007/0.009(750mm); 0.011(1000mm)
	Turning workpiece roundness	mm	0.004	
Others	Total power	KVA	12	
	N.W.	kg	1700	1700(750)/2100(1000)
	Overall size(L×W×H)	mm	2150×1260×1600	2150×1260×1600(750mm) 2400×1260×1600(1000mm)

* The marked accuracy just follows CHINA national standard GB/T 25659.1, actual accuracy is much higher

Main parts list:

Item	Brand
Spindle bearing	CHINA top-CSC/ZWZ
Ball screw bearing	CHINA top-CSC
Ball screw	CHINA top
Lubrication pump	JAPAN-HERG

Standard configuration:

- FANUC 0i TF CNC Controller
- Manual chuck
- 4 station tool post
- Manual tailstock

Optional configuration:

- SIEMENS 808D/GSK980TDI
- Hydraulic chuck
- 6 station tool turret
- Hydraulic tailstock



Features:

- Guideway width 312mm, suitable for light process
- Can choose Independent spindle or 2 class gear spindle
- Bed casted by China top quality compound resin sand cast iron
- Guideway hardened by ultrasonic frequency, good precision keeping
- Aging treatment, has good vibration absorption and rigidity
- Guideway stick PTFE, remove creeping, obviously increase precision, wearability and anti-impact force
- Spindle use high precision bearing, Germany KLUBER lipid
- High precision ball screw, connected with motor directly



Gear spindle



312mm guideway width



6,8 station tool turret(opt.)



SCHNEIDER electricity parts



SIEMENS 808D ADVANCED

Specification:

Item	Specification	Unit	BL-CK6136	BL-CK6140
Capacity	Guideway width	mm	312	
	Max. swing dia. over bed	mm	Φ360	Φ400
	Max. swing dia. over slide	mm	Φ200	Φ240
	Max. workpiece length	mm	750/1000	
Spindle	Spindle bore	mm	Φ52	
	Spindle taper	/	MT6#	
	Spindle speed	rpm	Independent spindle:100-1600; 2 class gears:25-1600(66-660,65-1600) 2 class gears:100-3000(100-1047,290-3000)	
	Spindle head type	/	C6	
	Chuck size	/	8"	
	Spindle motor	kw	5.5	
	X/Z axes	X axes travel	mm	210
X/Z axes	Z axes travel	mm	600/850	
	X/Z axes ball screw O.D.	mm	20/40	
	X/Z axes rapid rate	m/min	4/6	
	X/Z axes positioning accuracy	mm	±0.015	
	X/Z axes repositioning accuracy	mm	±0.006	
Tool post	Tool post	/	Vertical 4T/Horizontal 6,8T	
	Toolshank size	mm	20×20	
	Tailstock quill travel	mm	100	
Tailstock	Tailstock quill dia.	/	Φ60	
	Tailstock quill taper	/	MT4#	
	Turning accuracy	/	IT6-7	
Accuracy	Turning roughness	μm	Ra1.6	
	Turning roundness	mm	0.005	
	Turning flatness	mm	0.025/300	
Others	Overall size	mm	2150/2450×1350×1700	
	Weight	Kg	1300/1400	1600/1700

Main parts list:

Item	Brand
Bearing	CHINA top-HRB
Ball screw	CHINA top
Spindle	Oven-made
Hydraulic parts	TAIWAN
Electricity parts	FRANCE-SCHNEIDER

Standard configuration:

- GSK controller
- Manual chuck
- 4 station tool post
- Manual tailstock

Optional configuration:

- SIEMENS 808D ADVANCED/FANUC 0i TF controller
- Hydraulic chuck
- 6/8 station tool turret
- Hydraulic tailstock



Features:

- Adopt China best high strength compound resin sand cast iron
- Two times aging treatment, has good vibration absorption and rigidity
- Guideway hardened by ultrasonic frequency and precise ground, good precision keeping
- Guideway stick PTFE, remove creeping, obviously increase precision, wearability and anti-impact force
- Spindle use high precision bearing
- Adopt manual 3 class integral gear box type spindle, high rigidity, suitable for heavy turning



Machine Frame



Manual 3 class gear spindle



4 station tool turret



Strong tailstock



GSK980TDI

Specification:

Item	Specification	Unit	BL-SK40S	BL-SK50S	BL-SK66Q
Capacity	Guideway width	mm	390		
	Max. swing dia. over bed	mm	Φ400	Φ500	Φ660
	Max. swing dia. over slide	mm	Φ200	Φ280	Φ440
	Max. turning dia. (vertical 4T/horizontal 6T tool turret)	mm	Φ400/350	Φ500/350	Φ550/350
	Max. workpiece length (vertical 4T/horizontal 6 T tool turret)	mm	710/620: 960/870; 1460/1370; 1960/1870; 2960/2870(for SK40S/50S)		
Capacity	Max turning length (vertical 4T/horizontal 6 T tool turret)	mm	570/500: 820/750; 1320/1250; 1820/1750; 2820/2750(for SK40S/50S)		
	Max. workpiece weight	kg	700(10" manual chuck); 550(8" hydraulic chuck); 700(10" hydraulic chuck);		
Spindle	Spindle bore	mm	Φ77(opt.:82,105)		
	Spindle head type	/	ISO702/ I A2-8(opt.L-D8)		
	Spindle taper hole	/	Metric 1:20		
	Spindle speed	rpm	3 class gears		
	Spindle motor	kw	H:162-1620 M:66-660 L:21-210		
	Spindle max. output torque	Nm	7.5(servo) 800		
	Chuck size	/	10"		
X/Z axes	X axes travel(vertical 4T/horizontal 6T tool turret)	mm	275/235		
	Z axes travel	mm	600/850/1350/1850/2850(for SK40S/50S)		
	X/Z axes rapid speed	m/min	6/8		
	X axes ball screw O.D./pitch	mm	Φ25/5		
	Z axes ball screw O.D./pitch	mm	Φ40/6/750,1000,1500mm); Φ50/6/2000mm); Φ63/8/3000mm)		
Tool post	Tool turret type	/	Vertical 4/Horizontal 6 station		
	Tool shank size	mm	25×25		
Tailstock	Tailstock quill dia.	mm	Φ75(hydraulic tailstock: Φ80)		
	Tailstock quill travel	mm	150(hydraulic tailstock: 130)		
Accuracy	Tailstock quill taper	/	MTS#		
	X/Z axes positioning accuracy	mm	0.026/0.032(750mm), 0.036(1000mm), 0.040(1500,2000,3000mm)		
	X/Z axes repeatability positioning accuracy	mm	0.007/0.009(750mm), 0.011(1000mm), 0.014(1500/2000/3000mm)		
Others	Turning workpiece roundness	mm	0.004		
	N.W.	kg	2050/2100/2150/2200/3500		2150/2200/2250/2300
	Overall size(L×W×H)	mm	2450/2700/3200/3700/4700×1500×1700		2450/2700/3200/3700×1500×1700

* The marked accuracy just follows CHINA national standard GB/T 25659.1, actual accuracy is much higher

Main parts list:

Item	Brand
Spindle bearing	CHINA top-CSC/ZWZ
Ball screw bearing	CHINA top-CSC
Ball screw	CHINA top
Lubrication pump	JAPAN-LUBE

Standard configuration:

- FANUC 0i TF CNC Controller
- Manual chuck
- 4 station tool post
- Manual tailstock

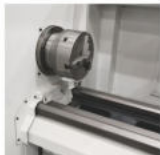
Optional configuration:

- SIEMENS 808D/GSK980TDI
- Hydraulic chuck
- 6 station tool turret
- Hydraulic tailstock



Features:

- Adopt China best high strength compound resin sand cast iron
- Times aging treatment, has good vibration absorption and rigidity
- Guideway hardened by ultrasonic frequency and precise ground, after scrapping, good precision keeping
- Guideway stick PTFE, remove creeping, obviously increase precision, wearability and anti-impact force
- Spindle use high precision bearing
- Adopt Independent spindle, servo spindle motor



Precise guideway



Independent spindle



4 station tool turret



Strong tailstock



GSK980TDI

Specification:

Item	Specification	Unit	BL-TK50	
Capacity	Guideway width	mm	390	
	Max. swing dia. over bed	mm	Φ500	
	Max. swing dia. over slide	mm	Φ280	
	Max. turning dia.(vertical 4T/horizontal 6T tool turret)	mm	Φ500/350	
	Max. workpiece length	mm	1100/1600/2100/3100	
	Max turning length	mm	1000/1500/2000/3000	
Spindle	Max. workpiece weight	kg	700(10" manual chuck)	
	Spindle bore	mm	Φ87	
	Spindle head type	/	ISO702/ I A2-8	
	Spindle taper hole	/	Metric 1:20	
	Spindle speed	rpm	30-2500	
	Spindle motor	kw	15(servo)	
	Spindle max. output torque	Nm	354	
	Chuck size	/	10"	
	X/Z axes	X axes travel(vertical 4T/horizontal 6T tool turret)	mm	275/235
		Z axes travel	mm	1000/1500/2000/3000
X/Z axes rapid speed		m/min	6/8	
X,Z axes ball screw O.D./pitch		mm	Φ25/5,Φ40/6	
Tool post	Tool turret type	/	Vertical 4/Horizontal 6 station	
	Tool shank size	mm	25×25	
	Tailstock quill dia.	mm	Φ75/hydraulic tailstock: Φ80	
Tailstock	Tailstock quill travel	mm	150/hydraulic tailstock: 130	
	Tailstock quill taper	/	MT5#	
	Accuracy	X/Z axes positioning accuracy	mm	0.026/0.036(1000),0.040(1500,2000,3000)
X/Z axes repeatability positioning accuracy		mm	0.007/0.011(1000),0.014(1500/2000/3000)	
Turning workpiece roundness		mm	0.004	
Others	N.W.	kg	2800/3200/3600/4600	
	Overall size(L×W×H)	mm	2700/3200/3700/4700×1500×1700	

* The marked accuracy just follows CHINA national standard GB/T 25659.1, actual accuracy is much higher

Main parts list:

Item	Brand
Spindle bearing	CHINA top-CSC/ZWZ
Ball screw bearing	CHINA top-CSC
Ball screw	CHINA top
Lubrication pump	JAPAN-LUBE

Standard configuration:

- FANUC 0i TF CNC Controller
- Manual chuck
- 4 station tool post
- Manual tailstock

Optional configuration:

- SIEMENS 808D/GSK980TDI
- Hydraulic chuck
- 6 station tool turret
- Hydraulic tailstock



Features:

- Guideway width 400mm, suitable for heavy cutting
- Can choose independent spindle or 3 class gear spindle
- Can choose 52mm, 80mm, 104mm spindle bore
- Bed casted by China best compound resin sand cast iron
- Guideway hardened by ultrasonic frequency, good precision keeping
- Aging treatment, has good vibration absorption and rigidity
- Guideway stick PTFE, remove creeping, obviously increase precision, wearability and anti-impact force
- Spindle use high precision bearing, Germany KLUBER lipid
- High precision ball screw, connected with motor directly



3 class gear spindle



Independent spindle



4 station tool turret



8 station tool turret



SCHNEIDER electricity parts

Specification:

Item	Item	Unit	BL-CAK6140	BL-CAK6150	BL-CAK6161	BL-CAK6166	BL-CAK6180	
Capacity	Guideway width	mm			400			
	Max. swing dia. over bed	mm	Φ400	Φ500	Φ610	Φ660	Φ800	
	Max. swing dia. over slide	mm	Φ210	Φ280	Φ370	Φ400	Φ540	
	Center distance	mm	750/1000/1500/2000/3000					
	Max. workpiece weight	kg	300					
Spindle	Spindle bore	mm	Φ52(Opt. Φ80/Φ104)					
	Spindle taper	/	MT6#(spindle bore Φ52); Φ90 1:20(spindle bore Φ80); Φ113 1:20(spindle bore Φ104)					
	Spindle speed	rpm	Independent spindle: 100-1600; 3 class gears: 21-150, 66-500, 162-1500					
	Spindle head type	/	C6(spindle bore Φ52); D8(spindle bore Φ80, Φ104)					
	Chuck size	/	8"/10"					
X/Z axes	Spindle motor	kw		7.5		11		
	X axes travel	mm	250	260	320	340	410	
	Z axes travel	mm	600/850/1350/1850/2850					
	X/Z axes ball screw Q.D.	mm	25/50					
	X/Z axes positioning accuracy	mm	±0.015					
Tool post	X/Z axes repositioning accuracy	mm	±0.006					
	X/Z axes rapid rate	m/min	4/6					
	Tool post type	/	Vertical 4T/Horizontal 6.8T					
	Toolshank size	mm	25×25					
	Tailstock quill travel	mm	150					
Tailstock	Tailstock quill dia.	mm	Φ75					
	Tailstock quill taper	/	MT5#					
	Turning accuracy	/	IT6-7					
Accuracy	Turning roughness	μm	Ra1.6					
	Turning roundness	mm	0.005					
	Turning flatness	mm	0.025/300					
Others	Overall size	mm	2450/2700/3200/3700/4700× 1600×1800		2500/2750/3250/3750/4750×1650×1900			
	Net weight	kg	2100/2200/2300/ 2700/3500	2200/2300/2400/ 2800/3600	2250/2400/2600/ 2850/3650	2300/2450/2650/ 2900/3700	2400/2550/2750/ 3000/3800	

Main parts list:

Item	Brand
Bearing	CHINA top-HRB
Spindle	Own-made
Ball screw	CHINA TOP
Hydraulic parts	TAIWAN
Electricity parts	FRANCE-SCHNEIDER

Standard configuration:

- GSK980TC3 controller
- Manual chuck
- 4 station tool post
- Manual tailstock

Optional configuration:

- SIEMENS 808D ADVANCED/FANUC 0i TF controller
- Hydraulic chuck
- 6/8 station tool turret
- Hydraulic tailstock



Features:

- Adopt China best high strength compound resin sand cast iron
- Aging treatment, has good vibration absorption and rigidity
- Guideway hardened by ultrasonic frequency and precise ground, good precision keeping
- Guideway stick PTFE, remove creeping, obviously increase precision, wearability and anti-impact force
- Adopt 3 class Integral gear box type spindle, big bore, high rigidity, suitable for heavy turning



Frame



3 class gear spindle



560mm guideway



4 station tool turret



6 station tool turret

Specification:

Item	Specification	Unit	BL-HK63B	BL-HK80B
Capacity	Guideway width	mm	560	
	Max. swing dia. over bed	mm	Φ630	Φ800
	Max. swing dia. over slide	mm	Φ360	Φ500
	Max. turning dia. (vertical 4T/horizontal 6T tool turret)	mm	Φ630/500	Φ740/610
Spindle	Center distance	mm	1000/1500/2000/3000(vertical 4T tool turret) 900/1400/1900/2900(horizontal 6T tool turret)	
	Max. workpiece weight	kg	1200(standard); 1500(max.)	
	Spindle bore	mm	Φ105	
	Spindle head type	/	A1-11	
	Spindle speed	rpm	3 class gears H-112-1120 M-37-373 L-20-210	
	Spindle motor	kw	11(servomotor)	
	Spindle max. torque	Nm	1265	
X/Z axes	Chuck size	/	Φ315(manual 3-jaw chuck)	
	X axes travel	mm	370	390
	Z axes travel	mm	760/1310/1810/2810(vertical 4T tool turret) 660/1210/1710/2710(horizontal 6T tool turret)	
	X/Z axes motor	kw	1.4/2.5(FANUC)	
Tool post	X/Z axes rapid speed	m/min	6/7	
	X axes ball screw O.D./pitch	mm	Φ40/5	
	Z axes ball screw O.D./pitch	mm	Φ50/8(1000, 1500mm); Φ63/8(2000, 3000mm)	
	Tool turret type	/	Vertical 4/Horizontal 6 station	
Tailstock	Tool shank size	mm	32×32, Φ32	
	Tailstock quill dia.	mm	Φ100	
	Tailstock quill travel	mm	250(150 for hydraulic tailstock & 6 station tool turret)	
Accuracy	Tailstock quill taper	/	MT5#	
	X/Z axes positioning accuracy	mm	0.026/0.032(1000), 0.040(1500, 2000, 3000)	
	X/Z axes repeatability positioning accuracy	mm	0.007/0.009(1000), 0.014(1500, 2000, 3000)	
	Turning workpiece roundness	mm	0.004	
	Total power	KVA	30	
Others	N.W.	kg	4600/5100/5600/6100	4800/5300/5800/6400
	Overall size(L×W×H)	mm	3550/4000/4500/5600×2000×1850	3700/4100/5000/5600×2000×2000

* The marked accuracy just follows CHINA national standard GB/T 25659.1, actual accuracy is much higher

Main parts list:

Item	Brand
Spindle bearing	CHINA top-CSC/ZWZ
Ball screw bearing	CHINA top-CSC
Ball screw	CHINA top
Lubrication pump	JAPAN-LUBE

Standard configuration:

- FANUC 0i TF CNC Controller
- Manual chuck
- 4 station tool post
- Manual tailstock

Optional configuration:

- SIEMENS 808D/GSK980TDI
- Hydraulic chuck
- 6 station tool turret
- Hydraulic tailstock
- Steady rest
- Follow rest

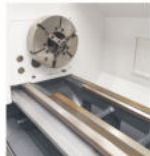


Features:

- Adopt China best high strength compound resin sand cast iron
- Adopt mono-block floor type bed, super high rigidity
- Aging treatment, has good vibration absorption and rigidity
- Guideway hardened by ultrasonic frequency and precise ground, good precision keeping
- Guideway stick PTFE, remove creeping, obviously increase precision, wearability and anti-impact factor
- Adopt 4 class Integral gear box type spindle, big bore, high rigidity, suitable for heavy turning
- Hydraulic type Automatic class switch



Hydraulic gear spindle



Strong guideway



4 station tool turret



Strong tailstock



Follow rest

Specification:

Item	Specification	Unit	BL-HK80	BL-HK100
Capacity	Guideway width	mm	650	755
	Max. swing dia. over bed	mm	Φ800	Φ1040
	Max. swing dia. over slide	mm	Φ480	Φ650
	Max. turning length	mm	/	1300/2800
	Center distance	mm	1000/1500/2000/3000/4000	1500/3000
Spindle	Spindle bore	mm	Φ105	Φ130
	Spindle head type	/	A1-11	A2-15
Spindle	Spindle speed	rpm	20-1000(4 class, hydraulic automatic class switch, stepless speed in every class) I 20-204, II 39-354, III 71-642, IV 124-1000	3.5-500(4 class, hydraulic automatic class switch, stepless speed in every class) I 3.5-160, II 5-233, III 7-345, IV 11-500
	Spindle motor	kw	15(servo)	22(servo)
X/Z axes	Chuck size	mm	Φ315(Manual 3-jaw chuck)	Φ630(Manual 3-jaw chuck)
	X axes travel	mm	430	520
	Z axes travel	mm	760/1350/1850/2850/3850	1300/2800
	X/Z axes rapid speed	m/min	6/7	3/6
	X axes ball screw O.D./pitch	mm	Φ40/5	Φ40/6
Tool post	Z axes ball screw O.D./pitch	mm	Φ50/8(1000, 1500), Φ63/8(2000, 3000), Φ63/10(4000)	Φ63/10
	Tool turret type	/	Vertical 4 station electric tool turret	Vertical 4 station electric tool turret
Tailstock	Tool shank size	mm	32×32	40×40
	Tailstock quill dia.	mm	Φ100(1000, 1500, 2000, 3000), Φ140(4000)	Φ160
	Tailstock quill travel	mm	250(1000, 1500, 2000, 3000), 200(4000)	300
Accuracy	Tailstock quill taper	/	MT5#(1000, 1500, 2000, 3000), MT6#(4000)	MT6#
	X/Z axes positioning accuracy	mm	0.026/0.036(1000), 0.040(1500, 2000), 0.048(3000), 0.056(4000)	0.040/0.050(1500), 0.060(3000)
	X/Z axes repeatability positioning accuracy	mm	0.007/0.011(1000), 0.014(1500, 2000), 0.020(3000, 4000)	0.011/0.018(1500), 0.025(3000)
Others	Turning workpiece roundness	mm	0.004	0.01
	Total power	KVA	40	40
	N.W.	kg	7200/8000/8600/9600/11000	10500/12500
Others	Overall size(L×W×H)	mm	4280×2200×1900 (1000) 4880×2200×1900 (1500) 5800×2260×1900 (2000) 6850×2260×1900 (3000) 7700×2350×1900 (4000)	4640×2300×2100(1500) 6150×2650×2290(3000)

* The marked accuracy just follows CHINA national standard GB/T 25659.1, actual accuracy is much higher

Main parts list:

Item	Brand
Spindle bearing	CHINA top
Ball screw bearing	CHINA top
Ball screw	CHINA top
Lubrication pump	JAPAN-LUBE

Standard configuration:

- FANUC 0i TF CNC Controller
- Manual 3-jaw chuck
- 4 station tool post
- Manual Tailstock

Optional configuration:

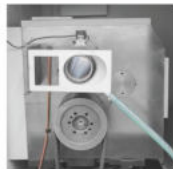
- SIEMENS 808D/GSK980TDI
- Steady rest
- Follow rest



CKL6180B 1500mm

Features:

- Guideway width 550/600mm, spindle bore $\Phi 104$ mm, heavy-duty type, suitable for heavy cutting
- Adopt China top quality compound resin sand cast iron, after aging treatment, good precision keeping
- Guideway hardened by ultrasonic frequency, good precision keeping, long using lifespan
- Guideway stick PTFE, remove creeping, good wearability
- Adopt Manual 3 class gear spindle, stepless speed in every class, can also choose Hydraulic 4 class



Manual 3 class gear spindle



Manual chuck



Follow rest and 4T tool post



Strong tailstock and steady rest



Electricity cabinet

Specification:

Item	Specification	Unit	BL-CKL6163	BL-CKL6180A	BL-CKL6180B	BL-CKL61100
Capacity	Guideway width	mm	550		600	
	Max. swing dia. over bed	mm	$\Phi 630$	$\Phi 800$	$\Phi 800$	$\Phi 1000$
	Max. swing dia. over slide	mm	$\Phi 350$	$\Phi 520$	$\Phi 480$	$\Phi 680$
	Center distance	mm	1000/1500/2000/3000/4000/5000/6000			
	Max. loading capacity	t	3		4	
Spindle	Spindle bore	mm	$\Phi 104$			
	Spindle bore taper	/	Metric $\Phi 120$ Mt5#			
	Spindle speed	rpm	10-1000 (manual 3 class gears, stepless in every class);		10-800 (manual 3 class gears, stepless in every class);	
	Spindle nose type	/	C11			
	Chuck size	mm	Manual 3-jaw $\Phi 315$		Manual 3-jaw $\Phi 400$	
Feeding axes	Spindle motor	kw	11		15	
	X axes travel	mm	320	420	420	520
	Z axes travel	mm	850/1350/1850/2850/3850/4850/5850			
	X/Z axes rapid rate	m/min	4/6			
Tool post	Tool post type	mm	4 station electric tool post			
	Toolshank size	mm	32×32	32×32	32×32	40×40
	Tailstock quill travel	mm	250			
Tailstock	Tailstock quill dia.	mm	$\Phi 100$		$\Phi 120$	
	Tailstock quill taper	/	MT5#		MT6#	
	Overall size	L	mm	3300/3800/4300/5300/6300/7300/8300		3500/4000/4500/5500/6500/7500/8500
W×H		mm	1750×1850	1850×1900	1950×1900	2000×2100
Others	N.W.	T	3.7/4.1/4.5/5.3/ 6.1/6.9/7.7	3.9/4.3/4.7/5.5/ 6.3/7.1/7.9	4.8/5.2/5.6/6.4/ 7.2/8/8.8	5/5.4/5.8/6.6/ 7.4/8.2/9

Standard configuration:

- GSK controller
- Manual chuck
- 4 station tool post
- Manual tailstock

Optional configuration:

- SIEMENS 808D ADVANCED/FANUC Oi TF controller
- Hydraulic chuck
- 6/8 station tool turret
- Hydraulic tailstock



CK61100 3000mm

Features:

- Guideway width 755mm, spindle bore Φ 130mm, heavy-duty type, suitable for heavy cutting
- Mono-block bed, high rigidity
- Adopt China top quality compound resin sand cast iron, after aging treatment, good precision keeping
- Guideway hardened by ultrasonic frequency, good precision keeping, long using lifespan
- Guideway stick PTFE, remove creeping, good wearability
- Adopt manual 4 class gear spindle, stepless speed in every class

Specification:

Item	Specification	Unit	BL-CK61100	BL-CK61125	BL-CK61140	BL-CK61160
Capacity	Guideway width	mm	755			
	Max. swing dia. over bed	mm	Φ 1000	Φ 1250	Φ 1400	Φ 1600
	Max. swing dia. over slide	mm	Φ 610	Φ 850	Φ 1000	Φ 1200
	Center distance	mm	1500/3000/4000/5000/6000			
	Max. loading capacity	t	6			
Spindle	Spindle bore	mm	Φ 130			
	Spindle bore taper	mm	Metric Φ 140/MT6#			
	Spindle speed	rpm	4-300(manual 4 class gears, speed stepless in every class)			
	Spindle nose type	/	A2-15			
	Chuck size	mm	Manual 4-jaw Φ 1000mm			
	Spindle motor	kw	22			
	Feeding axes	X axes travel	mm	520	620	720
Z axes travel		mm	1350/2850/3850/4850/5850			
X/Z axes rapid rate		m/min	4/6			
Tool post	Tool post type	mm	4 station electric tool post			
	Toolshank size	mm	40×40			
Tailstock	Tailstock quill travel	mm	300			
	Tailstock quill dia.	mm	Φ 160			
	Tailstock quill taper	/	MT6#			
Overall size	L	mm	5000/6500/7500/8500/9500			
	W×H	mm	2100×2100	2250×2300	2350×2450	2350×2600
Others	N.W.	T	10/11.5/12.5/13.5/14.5	11/12.5/13.5/14.5/15.5	12/13.5/14.5/15.5/16.5	13/14.5/15.5/16.5/17.5

Standard configuration:

- GSK controller
- Manual chuck
- 4 station tool post
- Manual tailstock

Optional configuration:

- SIEMENS 808D ADVANCED/FANUC 0i TF controller
- 6/8 station tool turret
- Hydraulic tailstock



CKW61125

Features:

- Guideway width 1100mm,spindle bore Φ100mm,heavy-duty type,suitable for heavy cutting
- Mono-block bed,high rigidity
- Adopt China top quality compound resin sand cast iron,after aging treatment,good precision keeping
- Guideway hardened by ultrasonic frequency, good precision keeping, long using lifespan
- Guideway stick PTFE,remove creeping,good wearability
- Adopt manual 4 class gear spindle, stepless speed in every class

Specification:

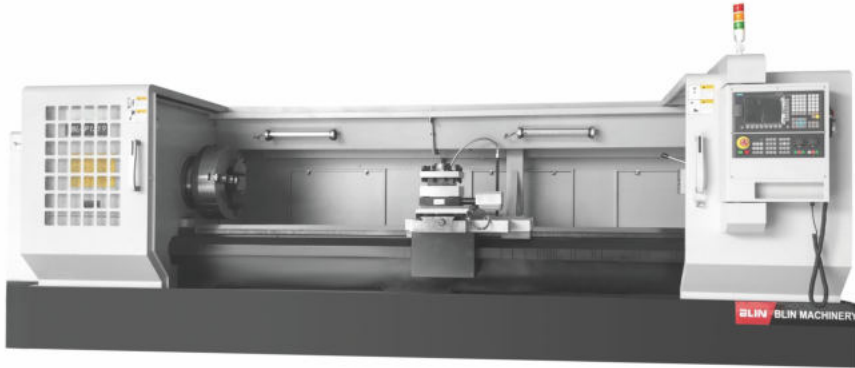
Item	Specification	Unit	CKW61125	CKW61140	CKW61160	CKW61180	CKW61200
Capacity	Guideway width	mm	1100				
	Max. swing dia. over bed	mm	Φ1250	Φ1440	Φ1640	Φ1840	Φ2020
	Max. swing dia. over slide	mm	Φ710	Φ820	Φ1020	Φ1220	Φ1420
	Center distance	mm	3000-10000				
	Max. loading capacity	t	10/20/30				
Spindle	Spindle bore	mm	Φ100				
	Spindle bore taper	/	Metric 120				
	Spindle speed	rpm	Manual 4 class gears,speed stepless in every class				
			10-300	10-300	10-300	10-200	10-200
	Spindle nose type	/	A2-15				
	Chuck size	mm	Manual 4-jaw Φ1250mm			Manual 4-jaw Φ1400mm	
Feeding axes	Spindle motor	kw	37				
	X axes travel	mm	700	750	830	930	1020
	Z axes travel	mm	2850-9850				
Tool post	X/Z axes rapid rate	m/min	4/6				
	Tool post type	mm	4 station electric tool post				
	Toolshank size	mm	50×50				
Tailstock	Tailstock quill travel	mm	300				
	Tailstock quill dia.	mm	Φ220				
	Tailstock quill taper	/	Metric 80				
Overall size	L	mm	6700-13700				
	W×H	mm	2550×2350	2600×2400	2700×2560	2800×2760	2900×2900
Others	N.W.	T	22.6-28.9	23.6-29.9	24.6-30.9	25.6-31.9	26.6-32.9

Standard configuration:

- GSK controller
- Manual chuck
- 4 station tool post
- Manual tailstock

Optional configuration:

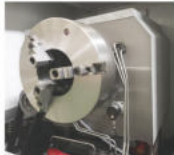
- FANUC 0i TF controller
- 6/8 station tool turret
- Hydraulic tailstock



QK1319 3000MM

Features:

- Guideway width 550/600mm
- Suitable to process internal thread and external thread of pipes, can be also used as standard cnc lathe
- Adopt China top quality compound resin sand cast iron, after aging treatment, good precision keeping
- Guideway hardened by ultrasonic frequency, good precision keeping, long using lifespan
- Guideway stick PTFE, remove creeping, good wearability
- Adopt gear spindle, stepless speed in every class



Spindle double chucks



Manual gear spindle



Strong guideway



4 station tool turret



Strong tailstock

Specification:

Item	Specification	Unit	BL-QK1313	BL-QK1319	BL-QK1322	BL-QK1325	BL-QK1327A
Capacity	Guideway width	mm	550			600	
	Max. swing dia. over bed	mm	Φ630/800			Φ800	
	Max. swing dia. over slide	mm	Φ340/520			Φ480	
	Center distance	mm	1000/1500/3000				
	Pipe threading range	mm	Φ30-Φ126	Φ50-Φ193	Φ50-Φ220	Φ50-Φ250	Φ50-Φ270
	Max. loading capacity	t	3			4	
Spindle	Spindle bore	mm	Φ130	Φ200	Φ225	Φ255	Φ280
	Spindle speed steps	/	Manual 3 class, stepless	Manual 4 class, stepless	Manual 4 class, stepless	Manual 4 class, stepless	Manual 4 class, stepless
	Spindle speed range	rpm	30-720	20-550	20-550	20-420	20-420
	Chuck size	mm	Manual 3-jaw Φ400	Manual 3-jaw Φ500	Manual 3-jaw Φ500	Manual 4-jaw Φ630	Manual 4-jaw Φ800
	Spindle motor	kw	11			15	
	Feeding axes	X axes travel	mm	320/420			420
Z axes travel		mm	850/1350/2850				
X/Z axes rapid rate		m/min	4/6				
Tool post	Tool post type	mm	4 station electric tool post				
	Toolshank size	mm	32×32				
	Tailstock quill travel	mm	250				
Tailstock	Tailstock quill dia.	mm	Φ100			Φ120	
	Tailstock quill taper	/	MT5#			MT6#	
	Overall size	mm	3300/3800/5300×1880×1850			3600/4100/5600×1930×1900	
Others	N.W.	T	4.5/5/6	4.6/5.1/6.1	4.7/5.2/6.2	6/6.5/7.5	6.2/6.7/7.7

Standard configuration:

- GSK980TC3 CNC controller
- Double Manual chuck
- 4 station tool post
- Manual tailstock

Optional configuration:

- SIEMENS 808D ADVANCED/FANUC 0i TF controller
- 6/8 station tool turret



QK1338

Features:

- Guideway width 755/1100mm
- Suitable to process big size internal and external pipe thread, can be also used as standard cnc lathe
- Adopt China top quality compound resin sand cast iron, after aging treatment, good precision keeping
- Guideway hardened by ultrasonic frequency, good precision keeping, long using lifespan
- Guideway stick PTFE, remove creeping, good wearability
- Adopt gear spindle, stepless speed in every class

Specification:

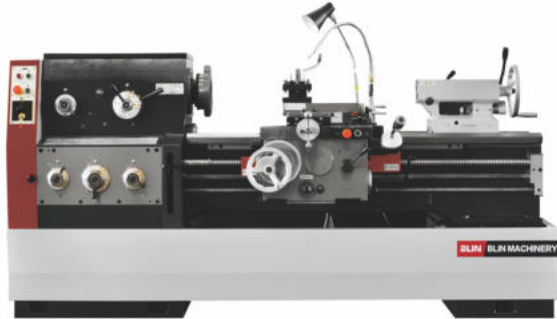
Item	Specification	Unit	BL-QK1327B	BL-QK1332	BL-QK1338	BL-QK1343	BL-QK1350	BL-QK1363	
Capacity	Guideway width	mm	755	755	755	755	755	1100	
	Max. swing dia. over bed	mm	Φ1000	Φ1000	Φ1000	Φ1000	Φ1200	Φ1400	
	Max. swing dia. over slide	mm	Φ610	Φ610	Φ610	Φ610	Φ710	Φ800	
	Center distance	mm	1500/3000(can be especially ordered for other length)						
	Pipe threading range	mm	Φ130-Φ270	Φ190-Φ320	Φ190-Φ380	Φ270-Φ430	Φ330-Φ510	Φ330-Φ630	
	Max. loading capacity	t	6	6	6	6	6	10	
Spindle	Spindle bore	mm	Φ280	Φ330	Φ390	Φ440	Φ520	Φ640	
	Spindle speed steps	/	Manual 4 class, stepless	Manual 3 class, stepless	Manual 3 class, stepless	Manual 3 class, stepless	Manual 3 class, stepless	Manual 3 class, stepless	
	Spindle speed range	rpm	10-320	10-280	8-205	8-205	8-190	2-120	
	Chuck size	mm	Manual 4-jaw Φ800	Electric 4-jaw Φ780	Electric 4-jaw Φ800	Electric 4-jaw Φ1000	Electric 4-jaw Φ1000	Manual 4-jaw Φ1250	
	Spindle motor	kw	22	22	22	22	22	37	
	Feeding axes	X axes travel	mm	520	520	520	520	520	750
Z axes travel		mm	1250/2750						
X/Z axes rapid rate		m/min	4/4						
Tool post	Tool post type	mm	4 station electric tool post						
	Toolshank size	mm	40×40	40×40	40×40	40×40	50×50	50×50	
	Tailstock quill travel	mm	300						
Tailstock	Tailstock quill dia.	mm	Φ160	Φ160	Φ160	Φ160	Φ160	Φ220	
	Tailstock quill taper	/	MT6#	MT6#	MT6#	MT6#	MT6#	Metric 80	
	Overall size	mm	4950/6450×2050×2050	5000/6500×2080×2080	5000/6500×2220×2120	5000/6500×2220×2120	5000/6500×2300×2200	5600/7100×2500×2500	
Others	N.W.	T	10.5/12.2	11.5/12.5	12/13	13/14	15/16	18/19.3	

Standard configuration:

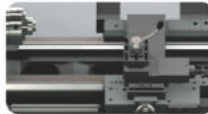
- GSK980TDi controller
- Dual Manual chuck
- 4 station tool post
- Manual tailstock

Optional configuration:

- SIEMENS 808D ADVANCED/FANUC 0i TF controller



24 class speed



High quality guideway



Operation handle



Strong tailstock

Features:

- Guideway width 390mm
- Adopt high strength cast iron, after repeated aging treatment
- Guideway is hardened by ultrasonic frequency and precise grinding
- Headstock is after precise machining, spindle and gears are hardened by ultrasonic frequency and precise grinding
- Guideway adopt scrapping and stick TF material
- Wide speed range, can directly turn metric or inch thread
- Can mount Gap

Specification:

Item	Specification	Unit	BL-HL-B40	BL-HL-B50	BL-HL-B66	BL-HL-B80		
Capacity	Guideway width	mm	390					
	Max. swing dia. over bed	mm	Φ400	Φ500	Φ660	Φ800		
	Max. swing dia. over cross slide	mm	Φ220	Φ300	Φ420	Φ560		
	Max. swing dia. over gap	mm	Φ630	Φ710	Φ870	Φ1000		
	Max. effective length in gap	mm	240					
	Center distance	mm	750/1000/1500/2000/3000			2000/3000		
Spindle	Max. turning length	mm	700/950/1450/1950/2950			1950/2950		
	Max. feeding force	Nm	3500					
	Spindle bore	mm	Φ52(Opt. Φ82, Φ105)			Φ82(Opt. Φ105)		
	Spindle hole taper	/	MT6#(Φ52mm bore), Φ90 1:20(Φ82mm bore), Φ113 1:20(Φ105mm bore)					
	Spindle nose	/	ISO 702/III NO.6(Φ52mm bore), ISO 702/II NO.8(Φ82, 105mm bore)			ISO 702/III NO.6(Φ82mm bore), ISO 702/II NO.8(105mm bore)		
	Spindle speed range	rpm	9-1600(24 steps, for Φ52.82mm bore), 36-1600(12steps, for Φ105mm bore)			8-1400(24 steps, for Φ82mm bore), 30-1400(12steps, for Φ105mm bore)		
	Spindle max. output torque	Nm	1400	1400	1200	/		
	Longitudinal rapid moving speed	m/min	50hz:4.5, 60hz:5.4					
	Cross rapid moving speed	m/min	50hz:1.9, 60hz:2.3					
	Feeding	Longitudinal basic feeding	mm/r	0.063-2.52(65kinds)			0.028-6.43(93 kinds)(for 82mm bore); 0.063-2.52(65kinds)(for 105mm bore)	
Longitudinal reduce feeding		mm/r	0.028-0.056(13 kinds)			/		
Longitudinal enlarge feeding		mm/r	2.86-6.43(15 kinds)			/		
Cross basic feeding		mm/r	0.027-1.07(65 kinds)			0.012-2.73(93 kinds)(for 82mm bore); 0.027-1.07(65 kinds)(for 105mm bore)		
Cross reduce feeding		mm/r	0.012-0.026(13 kinds)			/		
Cross enlarge feeding		mm/r	1.21-2.73(15 kinds)			/		
Tool post	Upper tool post travel	mm	145			320		
	Lower tool post travel	mm	320	320	310	320		
	Tool qty	/	4					
	Toolshank size	mm	25×25			28		
Thread	Distance from spindle center to tool support face	mm	28			±90°		
	Max rotary angle scale of square tool post	/						
	Metric thread	mm	0.5-224(48kinds)(for Φ52.82mm bore), 1-14(22kinds)(for Φ105mm bore)					
	Inch thread	TPI	72-1/8(46kinds)(for Φ52.82mm bore), 28-2(25kinds)(for Φ105mm bore)					
	Module thread	M.P.	0.5-112(42kinds)(for Φ52.82mm bore), 0.5-7(18kinds)(for Φ105mm bore)					
	Diametrical pitch thread	D.P.	56-1/4(45kinds)(for Φ52.82mm bore), 56-4(24kinds)(for Φ105mm bore)					
Tailstock	Travel of tailstock quill	mm	150			Φ90		
	Dia. of tailstock quill	mm	Φ75			Φ90		
	Taper of tailstock quill	/	MT5#					
	Tailstock cross movement	mm	±15					
Motor	Spindle motor power/speed	/	7.5kw, 1450r/min(50Hz); 1750r/min(60Hz)					
	Rapid movement motor power	/	0.3kw, 1360r/min(50Hz), 1750r/min(60Hz)					
	Coolant motor power	kw	0.15					
	Coolant pump flow	L/min	25					
Others	Weight	kg	1975/2050/2250/2450/2850	2050/2100/2300/2500/2900	2150/2200/2400/2600/3000	3300/3700		
	Machine length	mm	2380/2630/3130/3630/4630			3365/4365		
	Machine width×height	mm	975×1230	975×1270	975×1350	1340×1490		



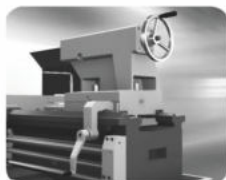
BL-HL-B80A

Features:

- Guideway width 560mm, suitable for heavy cutting
- Adopt high strength cast iron, after repeated aging treatment
- Guideway is hardened by ultrasonic frequency and precise grinding
- Headstock is after precise machining, spindle and gears are hardened by ultrasonic frequency and precise grinding
- Guideway adopt scrapping and stick TF material
- Wide speed range, can directly turn metric or inch thread
- Can mount Gap



14 class speed



Strong tailstock



**operation handle

Specification:

Item	Specification	Unit	BL-HL-B63B	BL-HL-B80A	
Capacity	Guideway width	mm	560		
	Max. swing dia. over bed	mm	Φ660	Φ830	
	Max. swing dia. over cross slide	mm	Φ400	Φ540	
	Max. swing dia. over gap	mm	Φ800	Φ970	
	Chuck size	mm	Φ315		
	Center distance	mm	1500/2000/3000/4000(only 1500mm can mount gap)		
	Max. turning length	mm	1400/1900/2900/3900		
Spindle	Gap effective length	mm	300		
	Spindle bore	mm	Φ105		
	Spindle hole taper	/	Metric 1:20		
	Spindle head type	/	A1-11		
	Spindle speed range	rpm	12.5-1120(14steps)		
	Feeding and thread	Longitudinal feeding range	mm/r	0.062-14.0(64 kinds)	
		Cross feeding range	mm/r	0.031-7.0(64 kinds)	
Upper tool post travel		mm	200		
Lower tool post travel		mm	480	515	
Toolshank size		mm	32×32		
Metric thread		mm	0.5-56(38kinds)		
Inch thread		TPI	56-0.5(43kinds)		
Tailstock	Module thread	M.P.	0.25-7(21kinds)		
	Diametrical pitch thread	D.P.	56-4(27kinds)		
	Travel of tailstock quill	mm	250		
	Dia. of tailstock quill	mm	Φ100		
	Taper of tailstock quill	/	MT5#		
	Others	Spindle motor power	kw	11	
		Coolant motor power	kw	0.18	
Weight		kg	4200/4500/5000/5800	4500/4800/5300/6100	
Overall size(L×W×H)		mm	3500/4000/5000/6000×1260×1385	3500/4000/5000/6000×1370×1470	