



BLIN MACHINERY

GERMAN TECHNOLOGY

Y,V STANDARD SERIES

B BOX-GUIDEWAY SERIES

CNC MILLING MACHINE
CNC MACHINING CENTER

S SERIES

CNC DRILLING & TAPPING CENTER



NINGBO BLIN MACHINERY CO.,LTD.

Export sales center: No.415 Zhenhai Avenue, Luotuo,Zhenhai District, Ningbo,China. P.C.:315202
Tel:+86-574-87176990 / 87579510 / 86571950 Fax:+86-574-87179916
Email: jimmy@blinmachinery.com
www.blincnc.com



www.blincnc.com

Machines' design and specification are subjected to update without notice

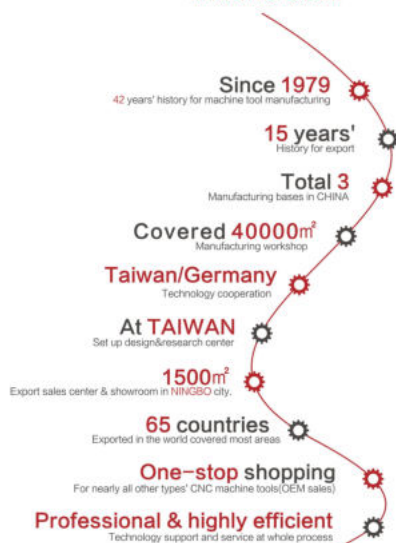
2021A

www.blincnc.com
NINGBO BLIN MACHINERY CO.,LTD.

History

Our advantages:

www.blincnc.com



CNC MILLING

• Y,V STANDARD SERIES

Y25 Conventional CNC milling machine structure, SWALLOW-TAIL shape HARD guideway, WITHOUT tool magazine	01/02
V4 PLUS LINEAR guideway, 12T Umbrella/16T Arm tool magazine	03/04
V7 LINEAR guideway, 12T Umbrella/16T Arm tool magazine	05/06
V8/V11 ROLLER type LINEAR guideway, 24T Arm tool magazine, HEAVY-DUTY type	07/08
Y1050 LINEAR guideway, 24T Arm tool magazine	09/10

• B BOX-GUIDEWAY SERIES

B850/1060/1580 3 axes BOX guideway, HEAVY-DUTY type,suitable for heavy cutting	11/12
---	-------

CNC DRILLING & TAPPING

• S SERIES

S450/550/640/850 8T PATENT High speed ATC	13/14
S600/800 16T/21T SLANT DISC tool magazine	15/16

SWALLOW-TAIL SHAPE HARD GUIDEWAY, WITHOUT TOOL MAGAZINE

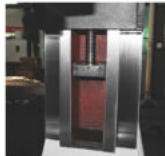


Features:

- Adopt mature conventional CNC milling machine structure, good stability
- SWALLOW-TAIL shape HARD guideway
- Without tool magazine



X,Y axes SWALLOW-TAIL shape hard guideway



Z axes SWALLOW-TAIL shape hard guideway



Inside



SCHNEIDER brand electricity parts



SIEMENS 808D ADVANCED

Specification:

Item	Specification	Unit	BL-Y25
Worktable	Table size	mm	700×260
	T slot(NO./width/gap)	mm	3/14/63
X/Y/Z axes	X/Y/Z axes travel	mm	400/250/280
	X/Y/Z axes ball screw(dia./pitch)	mm	32/6
	Cutting feeding speed	m/min	6~10
	Rapid moving speed	m/min	15
	Positioning precision	mm	±0.01
	Repeatable positioning precision	mm	±0.008
Spindle	Max. distance from spindle nose to worktable surface	mm	380
	Distance from spindle center to column surface	mm	250
	Spindle type	/	BT40
	Spindle motor	kw	2.2(inverter)
	Spindle speed	rpm	6000
Tool magazine	Tool magazine type	/	N/A
	Overall size(Half closed cover)	mm	1510×1200×2010
Others	Overall size(Full closed cover)	mm	1760×1840×2010
	N.W.(Half/Full closed cover)	kg	1300/1500

Main parts list:

Item	Brand
Ball screw bearing	CHINA top-HRB P4 class/Z axes NSK
Ball screw	CHINA top
Dishing spring	GERMANY
Spindle unit	TAIWAN
Inverter	TAIWAN TECO/JAPAN YASKAWA
Booster cylinder	TAIWAN
Pneumatic parts	TAIWAN-AIRTAC
Electricity parts	FRANCE-SCHNEIDER
Lubrication pump	Joint-venture

Standard configuration:

- SIEMENS 808D ADVANCED CNC controller
- Half closed cover

Optional configuration:

- GSK980MD CNC Controller
- Step feeding motor
- Full closed cover
- 4th axes



Features:

- 3 axes adopt high precision linear guideway
- Designed by GERMAN engineer
- Whole production process accord to TAIWANESE standard
- Chips outlet set at the back of machine
- Most parts adopt GERMAN/JAPANESE/TAIWANESE brand
- High speed, high precision, long using lifespan
- Adopt HT300 high class cast iron, after aging treatment and FEA analysis
- Bridge shape column, high rigidity, high stability
- 3 axes use C3 class precision ball screw, match up nut preloading and ball screw pre-stretching, pre-eliminate backlash and temperature rising, ensure stable positioning and repeatable positioning precision



Frame



Back-setted chips outlet



BT40 spindle unit



Table



12T Umbrella type tool magazine



SCHNEIDER brand electricity parts

Specification:

Item	Specification	Unit	BL-V4 PLUS
Worktable	Table size	mm	800 × 320
	Table max. loading	kg	200
	T slot(NO./width/gap)	mm	3/14/100
Travel	X/Y/Z axes	mm	450/300/480
	Distance from spindle nose to table surface	mm	105~585
Spindle	Distance from spindle center to column surface	mm	375
	Spindle type	mm	BT40/Ø120 7:24
	Spindle motor	kw	3.7(option:5.5kw)
	Spindle speed	rpm	Belt-drive: 8000/10000 Direct-drive: 12000
Feeding axes	X,Y,Z axes ball screw O.D./pitch	mm	32/12
	X,Y,Z axes linear guideway width	mm	30
	X/Y/Z axes motor	Nm	6/6/11(SIEMENS 808D)
	Cutting feed speed	m/min	12
	X/Y/Z axes rapid moving speed	m/min	36/36/24
	Positioning precision	mm	±0.005
Tool magazine	Repeatable positioning precision	mm	±0.003
	Tool magazine	/	Umbrella type 12T/Arm type 16T
	Max. tool weight	kg	8(Arm type 16T)
	Max. tool length	mm	220(Arm type 16T)
	Max. tool dia. (fully loaded)	mm	78(Arm type 16T)
Others	Max. tool dia. (no adjacent)	mm	120(Arm type 16T)
	Overall dimension(L×W×H)	mm	1830×1870×2120
	Weight	kg	2400

Main parts list:

Item	Brand
Spindle bearing	JAPAN-NSK
Ball screw bearing	TAIWAN-TPI
Ball screw	JAPAN-THK/TAIWAN-HIWIN
Linear guideway	JAPAN-THK/TAIWAN-HIWIN
Spindle unit	TAIWAN-VYU CHEN
Tool magazine	TAIWAN-OKADA
Booster cylinder	TAIWAN-HAO CHENG
Lubrication pump	TAIWAN-BEISUN
Power switch	TAIWAN-MEANWELL
Pneumatic parts	TAIWAN-AIRTAC
Electric parts	FRANCE-SCHNEIDER

Standard configuration:

- SIEMENS 808D ADVANCED CNC controller
- 12T Umbrella type tool magazine

Optional configuration:

- SIEMENS 828D/FANUC 0i MF CNC controller
- 16T Arm type tool magazine
- 4th axes



Features:

- Suitable for medium-sized cutting
- 3 axes adopt high precision linear guideway
- Designed by GERMAN engineer
- Whole production process accord to TAIWANESE standard
- Chips outlet set at back of machine
- Most parts adopt GERMAN/JAPANESE/TAIWANESE brand
- High speed, high precision, long using lifespan
- Adopt HT300 high class cast iron after aging treatment and FEA analysis
- Bridge shape column, high rigidity, high stability
- 3 axes use C3 class precision ball screw, match up nut preloading and ball screw pre-stretching, pre-eliminate backlash and temperature rising, ensure stable positioning and repeatable positioning precision



Frame



JAPAN THK linear guideway



Back-setted chips outlet



Table and inside



16T ARM type tool magazine

SCHNEIDER brand electricity parts

Specification:

Item	Specification	Unit	BL-V7
Worktable	Table size	mm	900×400
	Table max. loading	kg	300
	T slot(NO./width/gap)	mm	3/14/100
Travel	X/Y/Z axes	mm	720/450/470
	Distance from spindle nose to table surface	mm	120-590
Spindle	Distance from spindle center to column surface	mm	440
	Spindle type	mm	BT40/Φ120
	Spindle motor	kw	5.5
	Spindle speed	rpm	8000(option:10000 belt-drive/12000 direct-drive)
Feeding axes	Cutting feed speed	m/min	10
	X/Y/Z axes rapid moving speed	m/min	36/36/30
	X/Y/Z axes feeding motor	Nm	6/6/11(SIEMENS 808D ADVANCED)
	X/Y/Z axes ball screw dia./pitch	mm	32/16
	X/Y/Z axes linear guideway width	mm	30/30/30
Precision	Positioning precision	mm	±0.005
	Repeatable positioning precision	mm	±0.003
Tool magazine	Tool magazine type	/	Arm type 16T
	Max. tool weight	kg	8
	Max. tool length	mm	200
	Max. tool dia.(fully loaded)	mm	Φ80
	Max. tool dia.(no adjacent tool)	mm	Φ150
	Tool changing time	/	Tool to tool: 1.8s
Others	Overall dimension(L×W×H)	mm	2220×2000×2160
	Weight	kg	3200

Main parts list:

Item	Brand
Spindle bearing	JAPAN-NSK
Ball screw bearing	TAIWAN-TPI
Ball screw	JAPAN-THK/TAIWAN-HIWIN
Linear guideway	JAPAN-THK/TAIWAN-HIWIN
Spindle unit	TAIWAN-VYU CHENG
Tool magazine	TAIWAN-OKADA
Booster cylinder	TAIWAN-HAOCHENG
Pneumatic parts	TAIWAN-AIRTAC
Electric parts	FRANCE-SCHNEIDER
Lubrication pump	TAIWAN-BEISUN

Standard configuration:

- SIEMENS 808D ADVANCED CNC Controller
- 16T ARM type tool magazine

Optional configuration:

- SIEMENS 828D/FANUC 0i MF CNC Controller
- 12T Umbrella type tool magazine
- 4th axes
- Tool setting probe
- CTS(coolant through spindle)

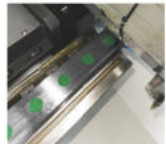


Features:

- 3 axes ROLLER type linear guideway, heavy-duty type, suitable for heavy-duty cutting
- Whole production process accord to TAIWAN standard
- Most parts adopt GERMAN/JAPAN/TAIWAN brand
- High speed, high precision, long using lifespan
- Adopt HT300 high class cast iron, after aging treatment and FEA analysis
- Bridge shape column, high rigidity, high stability
- Use 24T Arm type ATC, adopt CAM driving, fast and stable tool changing, tool selection for bi-way as random
- 3 axes use C3 class precision ball screw, match up nut preloading and ball screw pre-stretching, pre-eliminate backlash and temperature rising, ensure stable positioning and repeatable positioning precision



Strong frame



45mm ROLLER type linear guideway



Strong spindle and table



DEX brand 24T tool magazine



Special lipid lubrication design



SCHNEIDER brand electricity parts

Specification:

Item	Specification	Unit	BL-V8	BL-V11
Worktable	Table size	mm	1000×550	1200(1300)*×600
	T slot(NO./width/gap)	mm	5/18/90	5/18/100
	Table max. loading	kg	700	900
Travel	X/Y/Z axes travel	mm	800/550/550	1100/600/600
	Distance from spindle nose to table surface	mm	120~670	120~720
Spindle	Distance from spindle center to column face	mm	600	650
	Spindle type	/	BT40	
	Spindle motor	kw	7.5/11; 11/15*	11/15
	Spindle speed	rpm	8000 (10000 belt-drive*, 12000/15000 direct-drive*)	
Feeding axes	X/Y/Z axes linear guideway width	mm	35/45/45(ROLLER type) Z axes slide blocks	45/45/45(ROLLER type) X,Z axes 6pcs slide blocks
	X/Y/Z axes max. rapid moving speed	m/min	48/48/48	36/36/36
	X/Y/Z axes ball screw dia./pitch	mm	40/16	40/12
	X/Y/Z axes motor torque	Nm	22/22/22	
Precision	Positioning precision	mm	±0.005	
	Repeatable positioning precision	mm	±0.003	
Tool magazine	Tool magazine type	/	24T Arm type	
	Max. tool weight	kg	7	8
	Max. tool length	mm	280	
	Max. tool dia.(fully loaded)	mm	80	
	Max. tool dia.(no adjacent)	mm	110	
Others	Tool changing time	/	Tool to tool: 1.8s	Tool to tool: 2s
	Overall Size	mm	2500×2200×2500	2900×2300×2600
	Weight	kg	5500	7200

* As option

Main parts list:

Item	Brand
Spindle bearing	JAPAN-NSK/GERMANY-FAG
Ball screw bearing	JAPAN-NACHI/GERMANY-FAG
Linear guideway	TAIWAN-HIWIN, PMI/GERMANY-REXROTH
Ball screw	TAIWAN-HIWIN, PMI
Shaft coupler	JAPAN-NBK/MIKI PULLEY
Spindle	TAIWAN-KENTURN, YU CHENG
Tool magazine	TAIWAN-DEX
Booster cylinder	TAIWAN-CHEN SOUND
Pneumatic parts	TAIWAN-MINDMAN
Lubrication pump	JAPAN-LUBE
Electric parts	FRANCE-SCHNEIDER

Standard configuration:

- FANUC 0I MF CNC Controller
- 24T ARM type tool magazine

Optional configuration:

- SIEMENS 828D CNC controller
- Chip conveyor
- Coolant through spindle
- Tool setting probe
- 4th axes
- 5th axes



Features:

- Designed by German engineer
- Whole production process accord to TAIWAN standard
- Most parts adopt GERMAN/JAPAN/TAIWAN brand
- High speed, high precision, long using lifespan
- Adopt HT300 high class cast iron after aging treatment and FEA analysis
- Bridge shape column, high rigidity, high stability
- Counterweight system install rails, so spindle head's cutting moving or up-down moving is more fast and stable, and suppress the vibration to ensure accuracy.
- Use 24T Arm type ATC, adopt CAM driving, fast and stable tool changing, tool selection for bi-way as random.
- 3 axes use C3 class precision ball screw, match up nut preloading and ball screw pre-stretching, pre-eliminate backlash and temperature rising, ensure stable positioning and repeatable positioning precision



Frame



Table



Inside



24T ARM type tool magazine



TAIWAN pneumatic parts and lubrication pump



SCHNIDER brand electricity parts

Specification:

Item	Specification	Unit	BL-Y1050
Worktable	Table size	mm	1200×460
	T slot(NO./width/gap)	mm	5/18/90
	Table max. loading	kg	500
Travel	X/Y/Z axes travel	mm	1000/500/550
	Distance from spindle nose to table surface	mm	150-700
	Distance from spindle center to column face	mm	520
Spindle	Spindle type	/	BT40/φ150
	Spindle motor	kw	7.5/11; 11/15(opt.)
	Spindle speed	rpm	8000(option:10000 belt-drive/12000 direct-drive)
	X/Y/Z axes linear guideway width	mm	35/35/35(BALL type)
Feeding axes	X/Y/Z axes rapid moving speed	m/min	36/36/24
	X/Y/Z axes ball screw dia./pitch	mm	40/12
	X/Y/Z axes motor torque	Nm	12/12/22
Precision	Positioning precision	mm	±0.005
	Repeatable positioning precision	mm	±0.003
Tool magazine	Tool magazine type	/	24T Arm type
	Max. tool weight	kg	8
	Max. tool length	mm	300
	Max. tool dia.(fully loaded)	mm	78
	Max. tool dia.(no adjacent)	mm	120
	Tool changing time	/	Tool to tool: 2s
Others	Overall Size	mm	2900×2200×2500
	Weight	kg	5500

Main parts list:

Item	Brand
Bearing	JAPAN-NSK
Linear guideway	TAIWAN-HIWIN/PMI
Ball screw	TAIWAN-HIWIN/PMI
Spindle unit	TAIWAN-ROYAL/KENTURN
Tool magazine	TAIWAN-OKADA
Booster cylinder	TAIWAN-HAO CHENG
Pneumatic parts	TAIWAN-AIRTAC
Lubrication pump	TAIWAN-ISHAN
Electric parts	FRANCE-SCHNEIDER

Standard configuration:

- FANUC 0i MF CNC Controller
- 24T Arm type tool magazine

Optional configuration:

- SIEMENS 828D CNC controller
- Chip conveyor
- Coolant through spindle
- Tool setting probe
- 4th axes
- 5th axes

CHINA TOP QUALITY, BOX GUIDEWAY, HEAVY-DUTY TYPE, SUITABLE FOR HEAVY CUTTING



Features:

- 3 axes adopt WIDE RECTANGLE BOX guideway, Heavy-duty type, suitable for heavy-duty cutting
- Adopt CHINA top class cast iron
- Use 24T Arm type ATC, fast and stable tool changing
- 3 axes use TAIWAN C3 class precision ball screw
- Adopt TAIWAN precise spindle unit



Strong type BOX guideway



Inside view



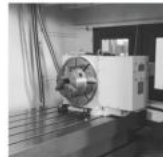
ARM type tool magazine



Electricity cabinet



Air conditioner



4th axes

Specification:

Item	Specification	Unit	BL-B850	BL-B1060	BL-B1580
Guideway	X/Y/Z axes guideway type	/	HARD BOX	HARD BOX	HARD BOX
	Table size	mm	1050×500	1300×600	1700×800
Worktable	Table max. loading	kg	600	800	1500
	T slot(NO./width/gap)	mm	5/18/90	5/18/120	5/22/135
Travel	X/Y/Z axes	mm	800/500/550	1000/600/600	1500/800/700
	Distance from spindle nose to table surface	mm	150~700	180~780	170~870
Spindle	Distance from spindle center to column surface	mm	560	655	800
	Spindle type	mm	BT40	BT40/BT50(opt.)	BT50
	Spindle motor	kw	7.5/11(FANUC) 7(SIEMENS 828D)	7.5/11(FANUC) 9(SIEMENS 828D)	15/18.5(FANUC) 12(SIEMENS 828D)
	Spindle speed range	rpm	8000(belt-drive)(opt.:10000/12000)	8000(belt-drive)(opt.:10000/12000)	7000
	Cutting feed speed	m/min	10	10	10
Feeding axes	Fast moving speed	m/min	20/20/20	20/20/20	20/20/20
	Ball screw O.D./pitch	mm	Φ40/10	Φ40/12	Φ63/10(X/Y)/Φ50/10(Z)
	Positioning precision	mm	0.012/0.010/0.012	0.015/0.012/0.012	0.028/0.018/0.020
Precision	Repeatable positioning precision	mm	0.008/0.006/0.008	0.010/0.008/0.008	0.018/0.010/0.013
	Tool magazine type	/	Umbrella type 20T/Arm type 24T		
Tool magazine	Max. tool weight	kg	8	8	15
	Max. tool length	mm	300	300	350
	Max. tool dia.	mm	Φ80	Φ80	Φ110
	Total power	KVA	15	20	35
Others	Overall dimension(L×W×H)	mm	2800×2300×3100	3200×2750×3200	4300×3750×3100
	Gross weight/Net weight	kg	6500/6000	8000/7500	13000/12500

* The marked accuracy just follows CHINA national standard GB/T18400, actual accuracy is much higher

Main parts list:

Item	Brand
Bearings	JAPAN-NSK/NTN
Ball screw	TAIWAN-HIWIN/PMI
Spindle	TAIWAN
Servo motor& driver	GERMAN- SIEMENS/JAPAN-FANUC
Air-oil cylinder	TAIWAN
Lubrication pump	JAPAN-HERG

Standard configuration:

- FANUC 0i MF CNC Controller
- 24T ARM type tool magazine

Optional configuration:

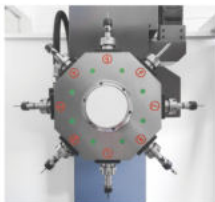
- SIEMENS 828D CNC Controller
- 20T Umbrella type tool magazine
- Chip conveyor
- ZF reduction box

8T PATENT HIGH SPEED ATC, HIGH RIGIDITY, HIGH EFFICIENCY



Features:

- PATENT design high speed& high rigidity TURRET type tool changer
- Super FAST tool changing(HIGH EFFICIENCY)
- Especially suitable for STEEL, CASTING etc hard material BIG hole's DRILLING and TAPPING etc RIGID MACHINING
- Especially suitable for multiple operation's combination, batch and high efficiency production
- Machining efficiency is higher than CNC Milling Machine, Rigidity is higher than traditional CNC drilling & tapping center
- Tool changer driven by servo motor(HIGH PRECISION), lock by hydraulic(HIGH RIGIDITY)
- Adopt HT300 class cast iron
- 3 axes adopt wide linear guideway, high rigidity
- 3 axes adopt big pre-stretched ball screw



Patent 8T tool magazine

Comparison with common tool magazine of cnc machining center

Our 8T tool magazine	Tool magazine of cnc machining center
Simple structure, good stability	Complex structure, high failure rate
Tool changing speed < 1.2s	Tool changing speed > 3s
Can change tool at random height	Have to change tool at required height
Tool never drop	Sometimes tool drop
No pull studs	Pull studs easy wear
Spindle not wear	Spindle easy wear
Tool holder will not block	Tool holder usually block
Good precision stability	Easy stick chips in spindle, difficult to keep stability
Tool qty max. 8T	Can be 16-24T
Max. speed only 6000rpm	Can be 6000-12000rpm
Tool holder not compatible	Tool holder is compatible
Tools has big interference	Small interference

Specification:

Item	Specification	Unit	BL-S450	BL-S550	BL-S640	BL-S850
Capacity	Max. drilling dia.(U driller)	mm	Φ20	Φ22	Φ24	Φ30
	Max. tapping dia.(standard/optional)	mm	M12/M16	M14/M24	M16/M27	M16/M33
Worktable	Table size(L×W)	mm	550×320	600×350	650×380	1000×500
	T slot(NO./width/distance)	mm	3/14/92	3/14/92	3/14/114	5/18/90
	Table max. loading	kg	180	230	300	600
Spindle	Spindle motor power	kw	3.7/5.5	5.5/7.5	5.5/7.5	7.5/11
	Spindle type	/	Own-made(ER32)	Own-made(ER32)	Own-made(ER40)	Own-made(ER40)
	Spindle speed range	rpm	6000			
	Distance from spindle nose to table face	mm	130-460	80-520	105-505	100-600
Feeding axes	X/Y/Z axes travel	mm	435/280/330	550/350/440	600/390/400	800/500/500
	X/Y/Z axes rapid moving speed	m/min	32			
	X/Y/Z axes positioning accuracy	mm	±0.008/300			
	X/Y/Z axes repeatable positioning accuracy	mm	0.005			
	XY/Z axes linear guideway width	mm	30/30/35	30/30/35	35/35/35	35/35/35(ROLLER type)
Tool magazine	Tool magazine type	/	Patent designed turret type			
	Tool changing time	s	1.2	1.2	1.5	1.5
	Tools qty	pc	8			
	Max. tool dia.	mm	Φ63	Φ63	Φ80	Φ80
Others	Overall dimension(L×W×H)	mm	1400×1500×2300	1580×1800×2100	2000×1650×2400	2400×1700×2100
	Weight	kg	1850	2000	2500	4500

Main parts list:

Item	Brand
Ball screw	TAIWAN-SHAC/PMI/HIWIN C3 class
Linear guideway	TAIWAN-PMI/HIWIN H class
Ball screw bearing	CHINA top-HRB P4 class
Spindle	Own-made
Spindle bearing	CHINA Top-HRB
Tool magazine belt wheel& belt	USA-GATES
Tool magazine bearing	JAPAN-NSK
Main electric parts	FRANCE-SCHNEIDER
Lubrication pump	Joint-venture

Standard configuration:

- SYNTREC 6MD CNC controller

Optional configuration:

- SYNTREC 22MA/FANUC 0I MF CNC controller
- 4th axes



Features:

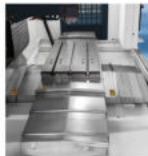
- Adopt HT300 class cast iron
- 3 axes adopt wide linear guideway, high rigidity
- 3 axes adopt big pre-stretched ball screw
- Adopt Slant Disc type 21T/16T tool magazine, fast tool changing



Frame



5600 21T tool magazine



5600 inside



Slant Disc type tool magazine



Pneumatic parts



SYNTEC 22MA controller

Specification:

Item	Specification	Unit	BL-S600	BL-S800
Capacity	Max. drilling dia.(U driller)	mm	Φ18	Φ20
	Max. tapping dia.	mm	M16	M18
Worktable	Table size(L×W)	mm	700×420	900×500
	T slot(NO./width/distance)	mm	3/14/125	5/18/90
	Table max. loading	kg	300	500
Spindle	Spindle motor power	kw	5.5/7.5	
	Spindle type	/	BT30	
	Spindle max. speed	rpm	Direct-drive 12000(opt.20000)	
	Distance from spindle nose to table face	mm	135-485	120-570
Feeding axes	X/Y/Z axes travel	mm	600/400/350	800/520/450
	Cutting feed speed	mm/min	5-15000	
	X/Y/Z axes rapid moving speed	m/min	48/48/48	48/48/36
	Positioning precision	mm	±0.003/300	
	Repeatable positioning precision	mm	0.003	
Tool magazine	Tool magazine type	/	Slant disc type	
	Tools qty	/	21	16
	Tool changing time(tool to tool)	s	1.6	1.8
	Max. tool dia.(full/no adjacent tool)	mm	Φ50/Φ120	Φ60/Φ120
Others	Overall dimension(L×W×H)	mm	1900×2100×2200	2400×1700×2100
	Weight	kg	3000	4500

Main parts list:

Item	Brand
Ball screw	TAIWAN-HIWIN/PMI
Linear guideway	TAIWAN-HIWIN/PMI
Ball screw bearing	SWEDEN SKF/GERMAN FAG
Spindle	TAIWAN
Tool magazine	TAIWAN-SANJET
Main electric parts	FRANCE-SCHNEIDER
Pneumatic parts	TAIWAN-AIRTAC
Lubrication pump	JAPAN-HERG

Standard configuration:

- SYNTEC 22MA CNC controller

Optional configuration:

- FANUC 0I MF CNC controller
- 4th axes